

INSTRUCTIONS FOR CR2M CLEAN REMOTE®

Works over 250 brands of commercial and retail TV's and most Pay-Per-View systems

No codes needed for TVs NOT connected to Pay-Per-View Movie systems. Simple ONE TOUCH set-up

CLEAN REMOTE® works for TV only (will not work TV/DVD, TV/VCR or TV/DVD/VCR combination units)

Hidden Battery compartment and attached door to help prevent batteries from being taken

Uses 2 AAA batteries

IMPORTANT--- PAY-PER-VIEW MOVIE SYSTEMS DO REQUIRE CODE ENTRY; After Installing 2 AAA batteries **Scroll down toward bottom of page for more Instructions**

Battery Installation:

1. Open cover: With keypad facing you, first slide dark lens cover away from you (photo A, step 1) and then lift lid upward from the back (photo A, step 2)
2. When placing AAA batteries in the compartment note the + and - symbols on the metal hinge should make contact with the corresponding + and - end of each battery (photo B).
3. Closing cover: **With keypad facing away from you** gently close cover by pressing downward (photo C, step 1) and sliding it toward the front (keypad) until it is aligned. (photo C, step 2)
4. Test remote by pressing the power button; the LED should light indicating that the batteries are in correctly. If the LED doesn't light, then the batteries are either in wrong or the batteries are bad.

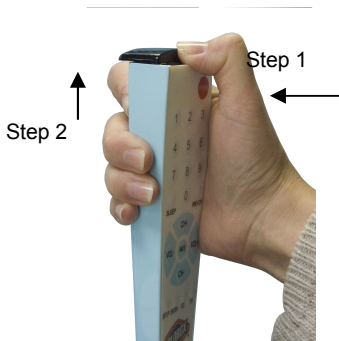


Photo A

Open with keypad facing you



Photo B

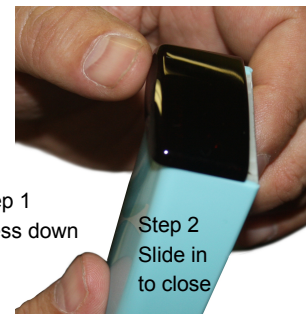


Photo C

Close with **keypad facing away** from you

NO CODE ENTRY/ONE STEP PROGRAMMING

For all TV's NOT connected to Pay-Per-View Movie systems

1. For TV's connected to pay- per - view movie systems continue to scroll down the page for Instructions.
2. For TV's **not connected** to pay- per view- movie systems. Turn on the TV and then stand back about 5 feet from TV and point the remote at the CENTER of the front panel of the TV. It will not be necessary to point the remote at that exact area once the remote is set-up.
3. Press and firmly hold down the Setup button, do not release. The LED will blink once and then after 7 seconds it will initiate code search. The LED will continue to blink every 2 seconds. Once your TV shuts off immediately remove your finger from the Setup button; the code automatically locks in.
4. Test the remote. If basic functions work, you are done. Menu functions will only work with Pay Per View Systems. Not all buttons will work because this is universal remote. If the main functions are not working properly, you may not have an exact code match. Start again at step #1. The code search will continue where it left off.

Important Note: If you think you missed the code or are testing remote on different brand TV's: Reset the remote back to the beginning of the code search; first press and hold the Setup button for 3 seconds and then while still pressing the Setup button down, press and hold the CC button down at the same time until

the red LED light blinks quickly 3 times. You have now reset the code list back to the beginning. Go back to step 1.

For TV's connected to On Command® system only.

A. Press setup and power button together until solid red light comes on. Next, put in code listed below. Red light should flash twice and go out. If light does not flash twice and go out, start over.

These codes are for On Command® systems only

For On Command® systems the main code is 06

For On Command® systems **if above code did not work properly start at A again and try** Code 05,07,08,10

After putting in code, make sure you are able to operate standard TV functions such as power, channel and volume

YOU MUST try menu and make sure you can fully navigate to Pay-Per-View movies.

If code does not work properly start at **A** again. Not all buttons will work because this is a universal remote.

For TV's connected to Lodgenet® system only.

YOU MUST READ THIS FIRST: PLEASE HAVE YOUR EXISTING Lodgenet® REMOTE BEFORE CHOOSING CODE FOR Clean Remote®- **Note:** Once you find correct code the first time use that same code on the **Clean Remote®** In all of your guestrooms.

A. On The Clean Remote press setup and power button together until solid red light comes on. Next, put in code from list below. Red light should flash twice and go out. If light does not flash twice & go out, start over.

Now carefully look at your existing Lodgenet® guest room remote (not the Clean Remote®) to choose correct code below

- 1.If your existing Lodgenet® **system** remote has part number **LRC-3200 on the top of back** enter Code 02
 - 2.If your existing Lodgenet® **system** remote **does not** have Rewind, Pause, Play or Fast Forward buttons, use Code 11
 - 3.If your existing Lodgenet® **system** remote **has** Rewind, Play and Fast Forward and **#** and ***** symbols, use Code 01
- If above codes did not work enter one of these codes. Code 03 or Code 04

After putting in code to Clean Remote®, make sure you are able to operate standard TV functions such as power, channel and volume. **YOU MUST try menu and make sure you can fully**

navigate to Pay-Per-View movies.

If code does not work properly start at **A** again. Not all buttons will work because this is a universal remote.

Note: To return to *TV only setup with no Pay-Per-View* movie systems press and hold down setup for 3 seconds and then while still holding down setup, press and hold the CC button down at the same time till red light blinks quickly 3 times, then release both buttons. Now scroll back up to instructions section titled - **For All TV's not connected to Pay-Per-View Movie Systems.**

Lodgenet® and On Command® are registered trademarks of Lodgenet Interactive Corporation
Clean Remote® is a registered trademark of Noso Control LLC Copyright© 2010, Noso Control, LLC

CR2M INS 07-11-2011